



Acclaim Web Services Directory Server

Overview

Acclaim Web Services Directory Server turns any Web Services Server into an enterprise directory server. Such directory server may then be accessed in a standard manner (LDAP or LDAPS).

Advantages & Opportunities

Web Services protocol is becoming the dominant mechanism for data interchange between an application and 'data buses', 'data services and other applications within the enterprise and the cloud. It is used whenever such bus, service or applications want to expose data to applications in a standard way.

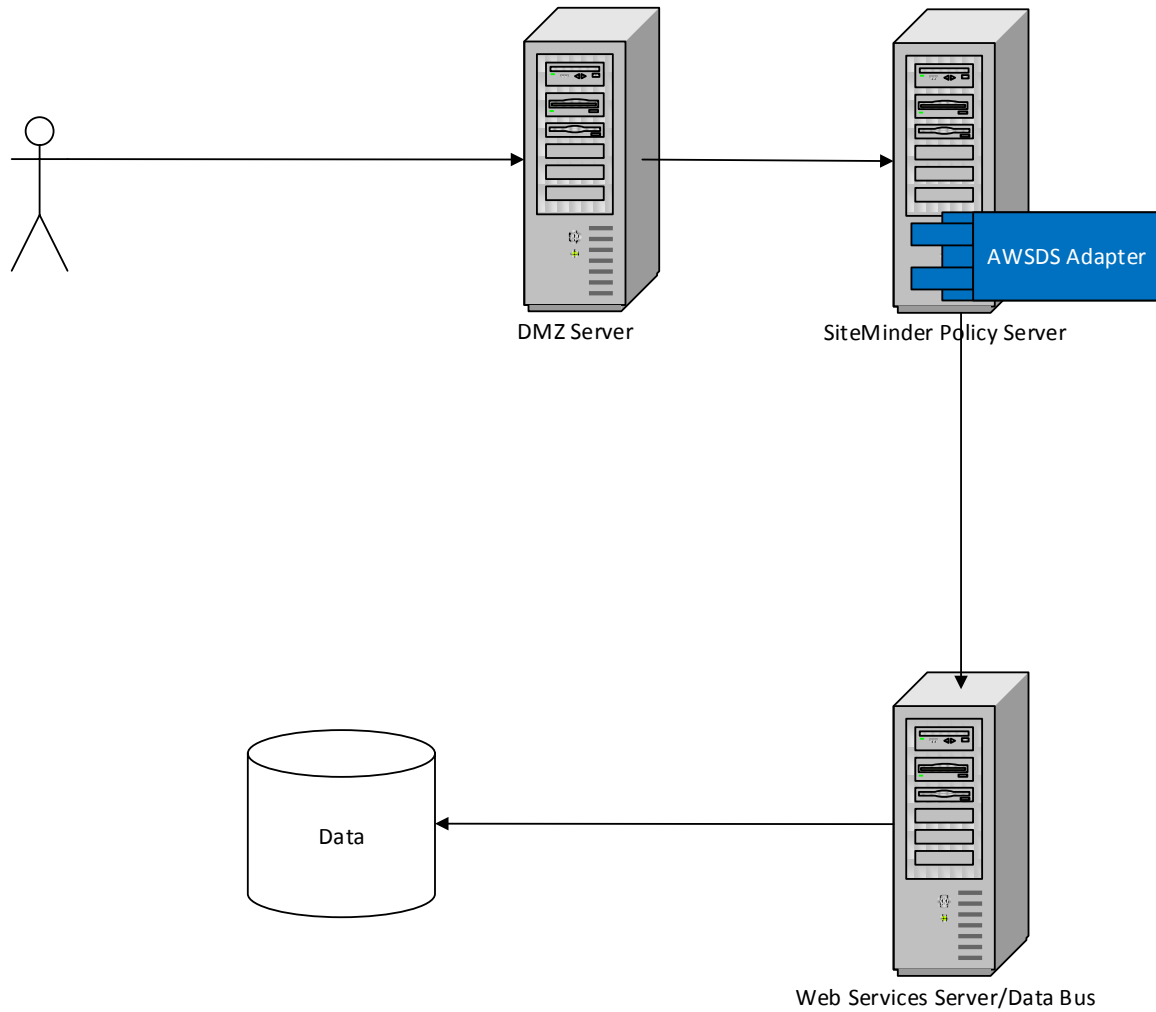
However, a large installed base of server applications still rely on standards like LDAP for their data access layer.

Acclaim Web Services Directory Server bridges this gap:

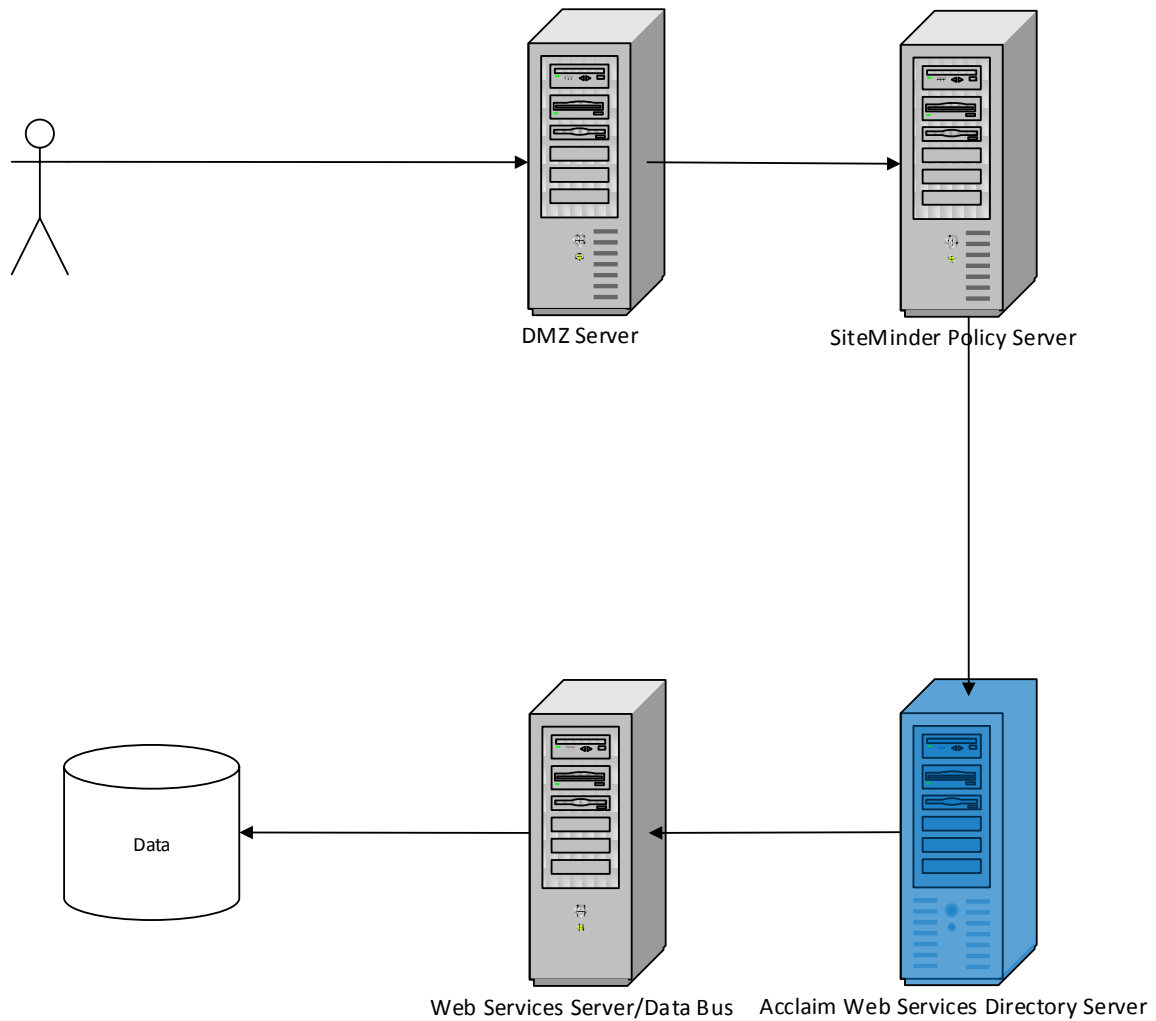
- Use existing server products that rely on protocols like LDAP as-is to access Web Services user repositories & data.
- May be used in Server or Adapter Mode.
- Fast and Light Weight Architecture.
- Native C++ Implementation.
- No need to change existing application code.

In the Enterprise

Acclaim Web Services Directory Adapter Mode:



Acclaim Web Services Directory Server Mode:



Sales Information

Acclaim Consulting Group, Inc

63 South Street, Suite 225

Hopkinton, MA 01748

+1 508 435 3851

corp@acclaimconsulting.com

www.acclaimconsulting.com

*SiteMinder is a trade mark of its owner.